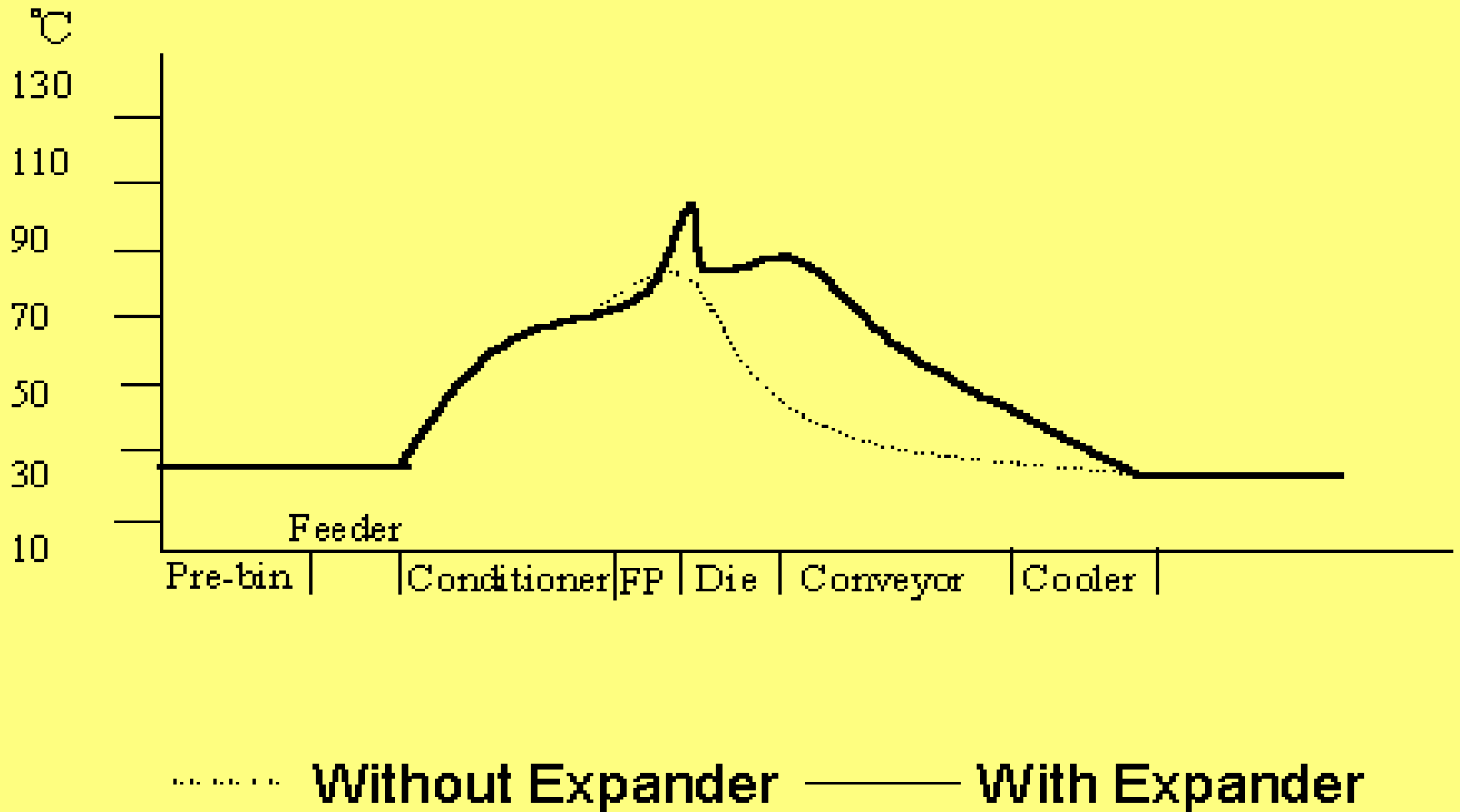


Liquid Coating Techniques of Animal Feeds

- March 24,2004
- Wu Desheng Senior Engineer
 - Director
 - Poultry & Livestock Equipment Research Institute
- Chinese Academy of Agricultural Mechanization Sciences

Feed temperature in typical expanding process

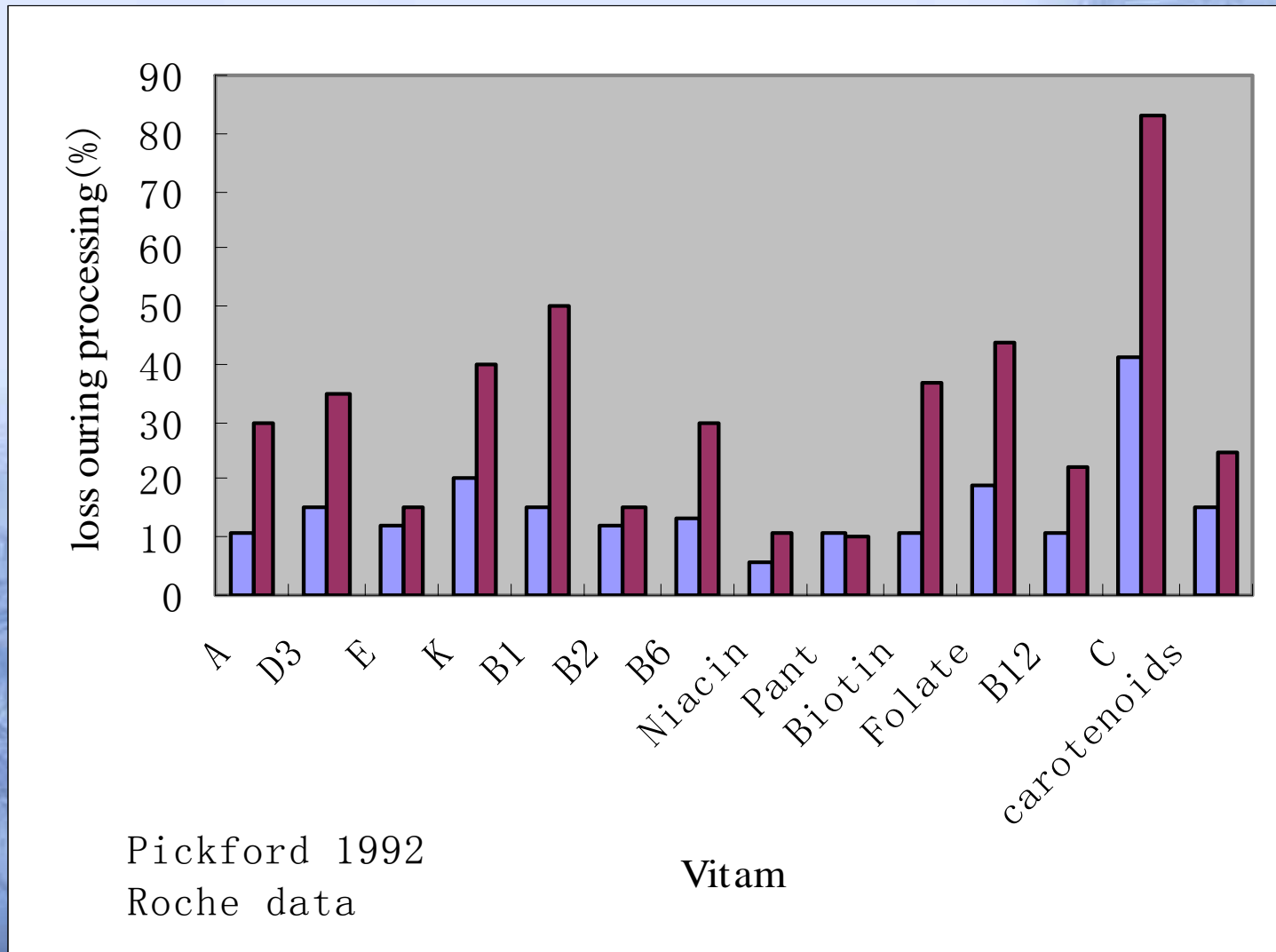


Effect of processing temperature on phytase activity in a barley/wheat-based pig feed ration

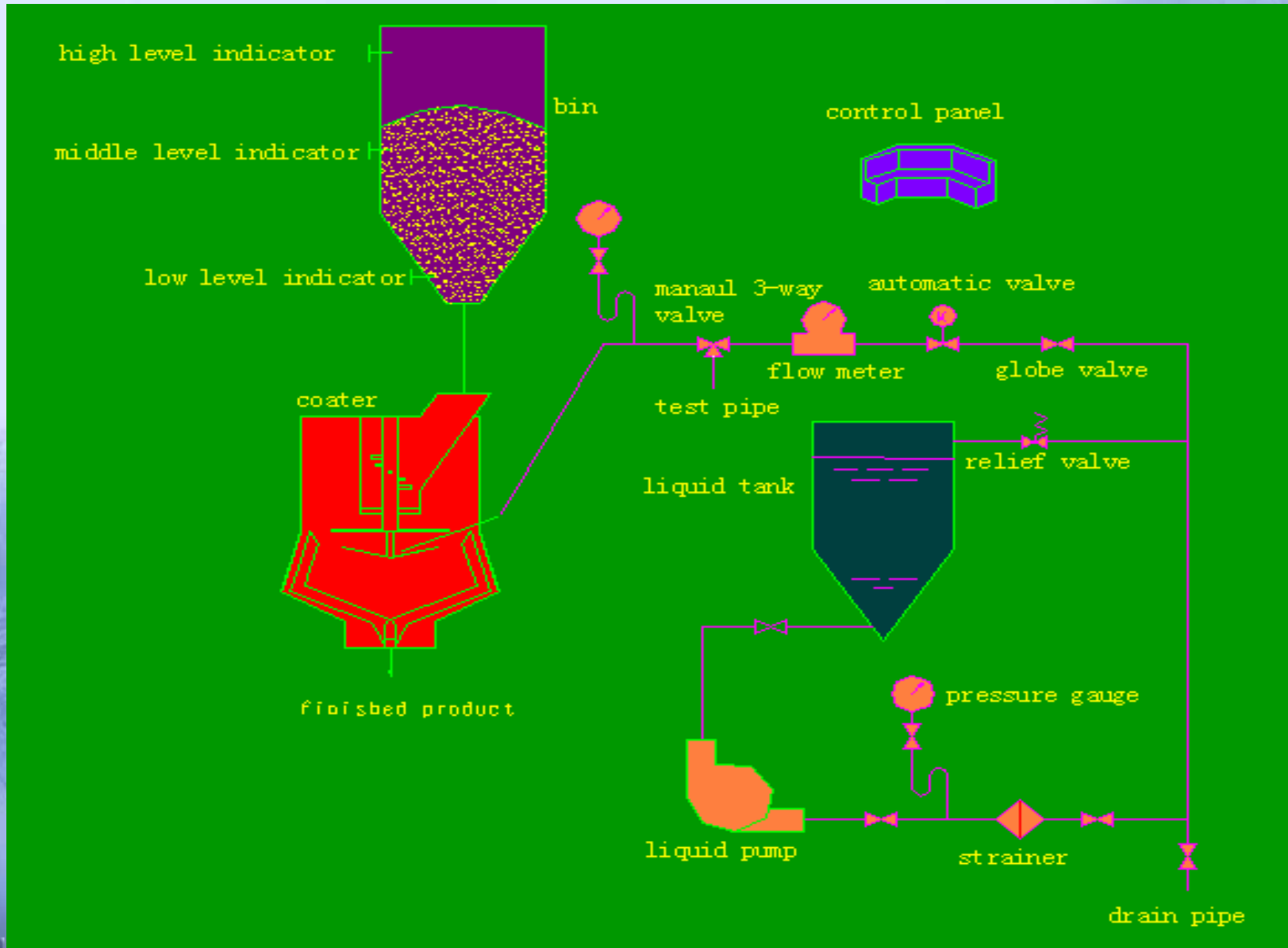
Fig. 1

Process Stage	Temperature	"Relative" Phytase Activity
Before conditioner	27.9°C	100
After expander	80.5°C	76
After pellet press	70°C	47
After expander	102°C	18
After expander+press	79°C	12

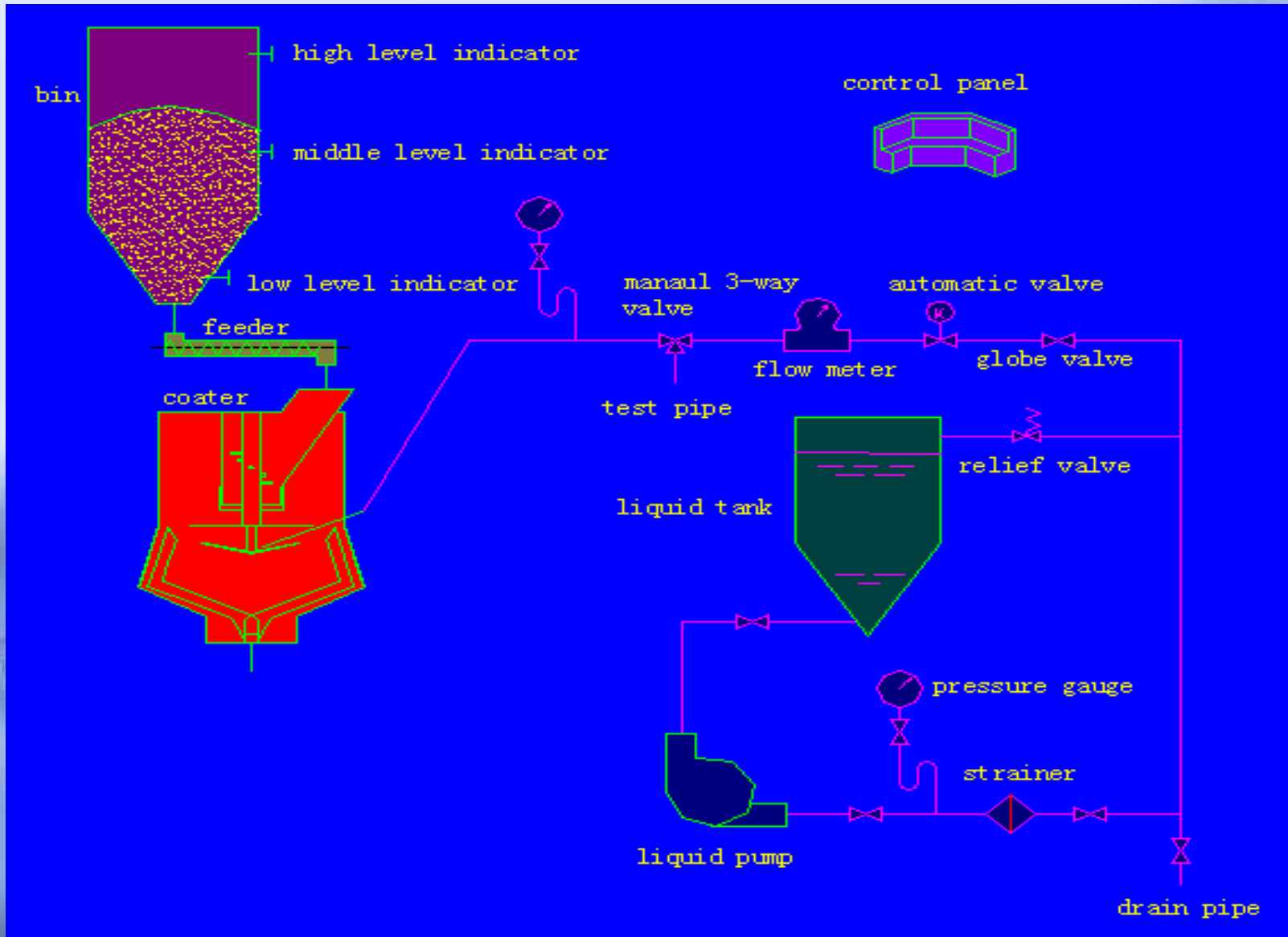
Figure 2. Effect of processing temperature, 160 and 195 deg F (70 and 90 deg C), on vitamins



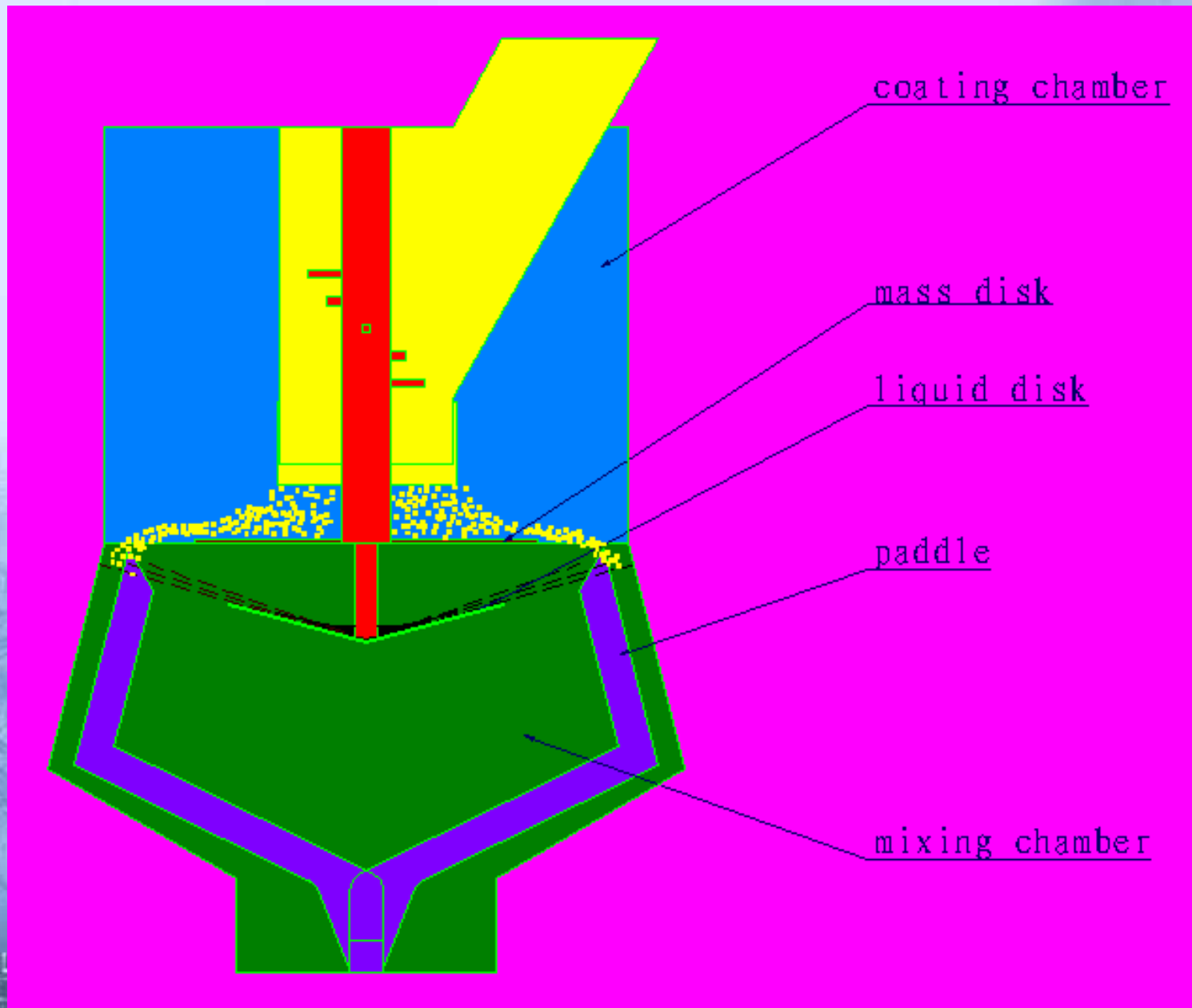
LC50S system configuration



LC50S system configuration



LC50 liquid coater



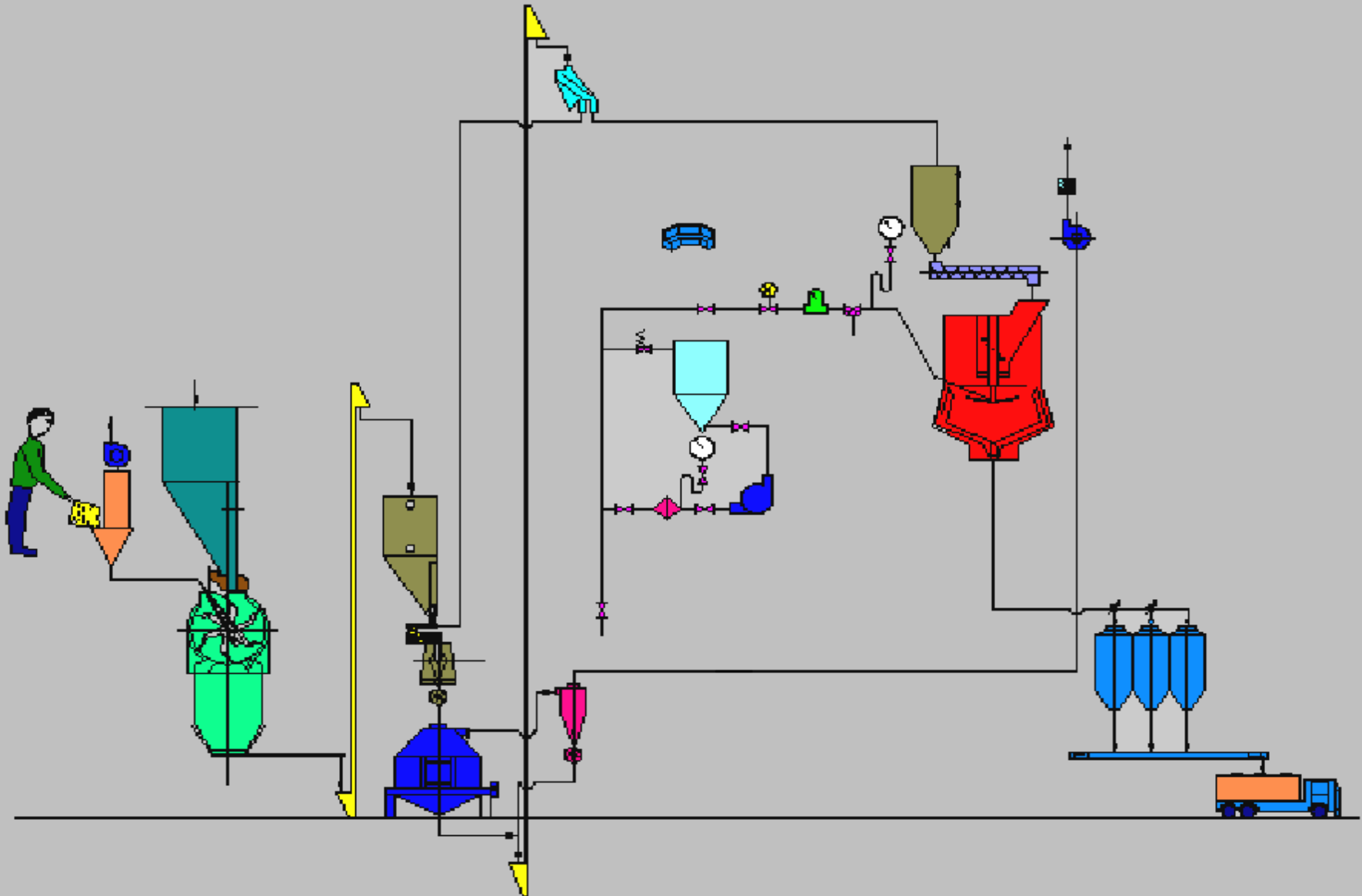
LC50 Liquid Coater



LC50 Liquid Coater



On-line coating system



Off-line coating system

