

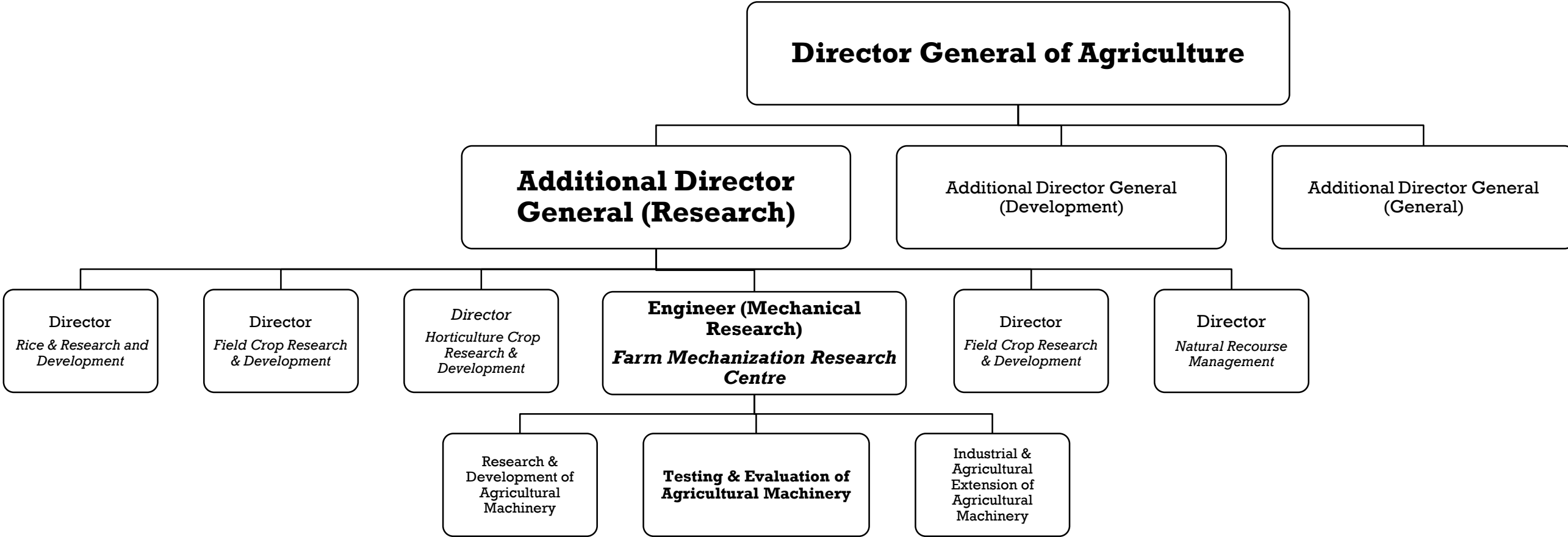


Eng. Ayesha Herath,
Farm Mechanization Research Center,
Department of Agriculture.

WARC

A large, three-dimensional sign spelling 'WARC' in a bold, stylized font. The letters are filled with a vibrant red color and outlined with a thick black border. They are mounted on a white wall with black metal supports. The background shows a clear sky, some greenery, and a building with a blue roof in the distance.

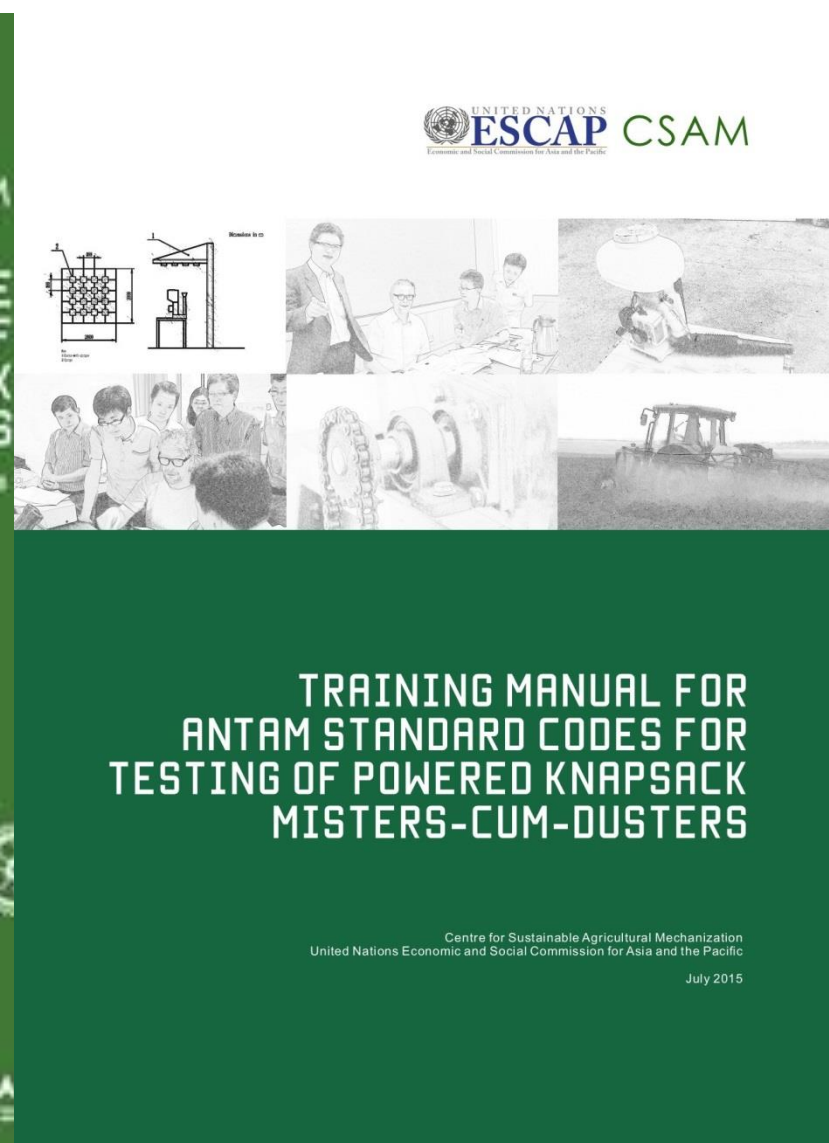
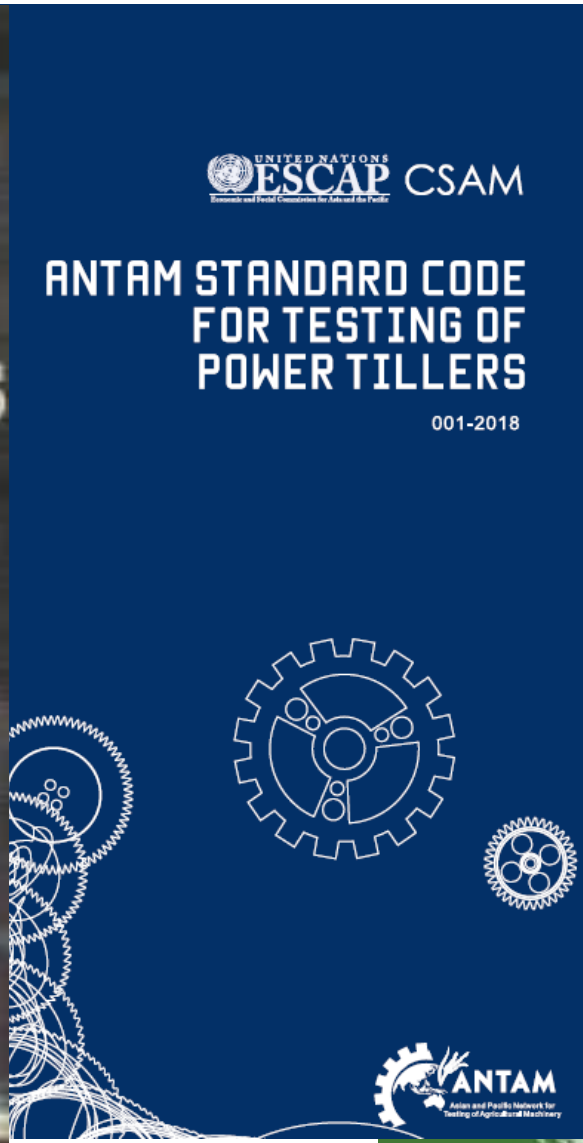
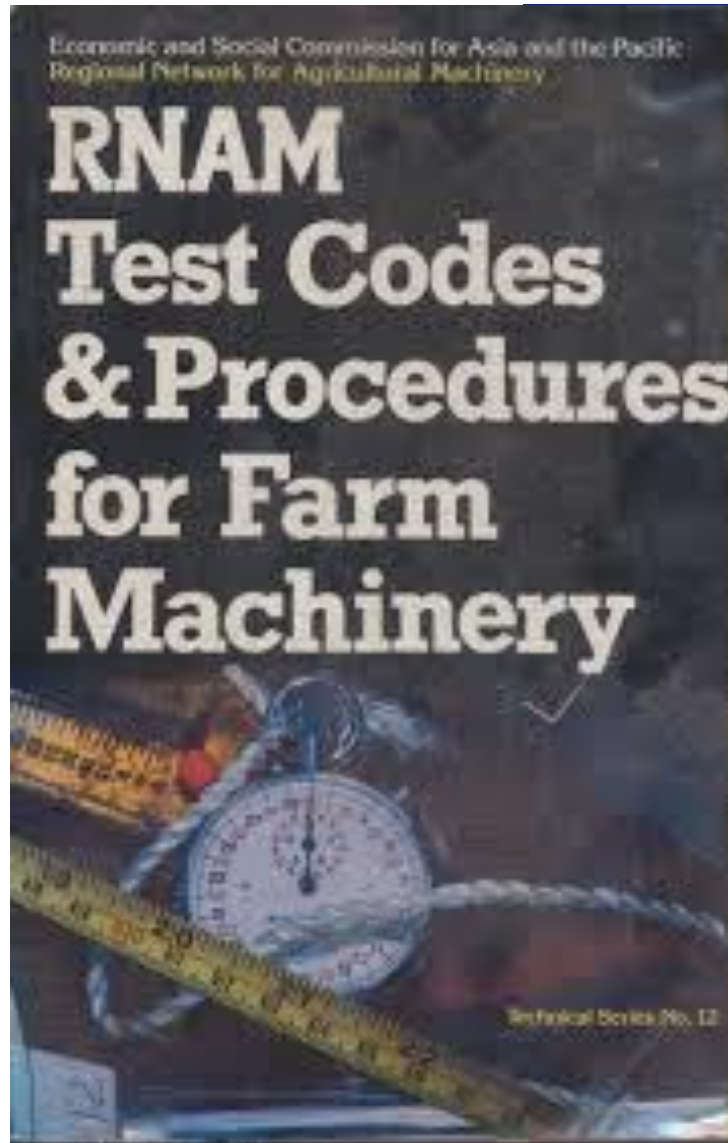
ORGANIZATION



QUALIFICATION OF TESTING STAFF

No	Designation and Service	Existing Cadre	Qualification
1	Mechanical Engineer (In charge)	1	Chartered Engineer
2	Mechanical Engineer	1	BSc Engineering
3	Technical Assistant (Mechanical)	1	Diploma in Farm Machinery Technology
4	Technical Assistant (Agriculture Extension)	2	Diploma in Agriculture
6	Machinist	1	NVQ Level 3
7	Mechanic	2	NVQ Level 3
8	Plant Yard Attendant	2	NVQ Level 3
9	Labour	5	-

FMRC TEST PROCEDURES



FMRC TESTING REQUIREMENT

- Machinery to be tested (One Sample)
- All the standard implements
- Testing charge
- Fuel, oil & Lubricant to conduct endurance test and regular services
- Manuals (Operator, Maintenance)
- Manufacturer Authorization
- Tool box

PROCESS OF TESTING

- Verification of Specification
- Performance Test
- Safety Measurements
- Durability Test

RECENT DEVELOPMENT IN TESTING STANDARDS

- Upgrade of mist blower testing standards in accordance with ANTAM
- Upgrade of Paddy trans-planter testing standards in accordance with ANTAM
- Implementation of paddy combine harvester testing standards
- Upgrade of water pump testing standards with ISO standards (On going)

SPRAYERS



TESTING OF PADDY TRANS-PLANTERS



TESTING OF COMBINE HARVESTERS



RECENT DEVELOPMENTS IN INFRASTRUCTURE



FUND ALLOCATION FOR TESTING LAB

Year	Allocated Fund/ USD
2016	5,000
2017	25,000
2018	-
2019	70,000

BENEFITS AND IMPORTANCE OF TESTING

- Mandatory requirement in government procurement process
- Farm Machinery act to be implemented to give more benefits for tested machineries
- Testing charges are very much low to encourage suppliers
- Easier to obtain leasing facilities for tested machinery
- Support for the suppliers to promote tested machinery



Copyright: ThreeBlindMen

THANK YOU.....